



2022 Xacobeo 6mR Worlds | Sanxenxo (Spain), 10th to 18th June 2022

2022 Xacobeo 6mR Worlds (Six Metre World Championship)

Sanxenxo (Spain), June 10 to 18, 2022

SAILING INSTRUCTIONS

The **International Six Metre World Championship** will be held in the waters of the Pontevedra estuary from the **10th to the 18th of June, 2022** (both inclusive), being organized by the **Real Club Náutico de Sanxenxo** (RCNS) by delegation of the Real Federación Española de Vela (RFEV), with the support of Consejo Superior de Deportes (CSD), Real Federación Gallega de Vela (RFGV) and the International Six Metre Association (ISMA).

The notation [NP] means that a breach of that rule will not be ground for protests by a boat. This changes RRS 60.1 (a).

The International Jury may impose penalties other than disqualification, for infractions of the instructions marked as [DP]. This modifies rule 64.1.

1. RULES

1.1 The Regatta will be governed by the rules as defined in the Racing Rules of Sailing (RRS) 2021-2024.

1.2 No National prescriptions will apply.

1.3 [DP] The Equipment Rules of World Sailing (ERS).

1.4 [DP] The International Six Metre Class Rating Rules.



1.5 The ISMA World Championship Rules.

1.6 RRS 90.3 (e) will apply.

1.7 The following prescriptions of the RFEV to World Sailing Regulation 20 will apply to Spanish boats or boats that compete representing a Spanish yacht club:

a) 20.2.3.3. The RFEV automatically grants its approval to boats of the recognized Dinghies, Windsurf and Kiteboard classes. All other boats must obtain prior authorization from the RFEV to display individual advertising.

b) 20.8.2. When a boat responsible, intends to display individual advertising, this one will have to pay the fees published on the RFEV website: <http://rfev.es/>

1.8 [DP] The Measurement Instructions that are part of the Sailing Instructions and are published on the ONB. Appendix C shows the minimum safety equipment required.

1.9 [NP][DP] **Special Rules.**

(a) Boats shall not put trash in the water. Trash may be placed aboard and then disposed in the containers on land.

(b) Each participating boat may be requested by the organizing authority to carry aboard cameras, sound and a positioning system device.

(c) Each boat must have on board a smartphone with the app eStela installed and in operation during the races. The organizers will provide the access code for each boat.

1.10 [NP][DP] All competitors and staff will follow any reasonable instruction given by a Race Committee Official.

1.11 If there is a conflict between languages the English text will take precedence.

2. NOTICES TO COMPETITORS

2.1 Notices to competitors will be posted on the Official Notice Board (ONB) located at the Race Office, downstairs at the RCNS, and also on the Official Virtual Notice Board at the website of the event: www.6mrworlds2022.com



3. CHANGES TO SAILING INSTRUCTIONS

3.1 Any changes to the SIs will be posted no later than two hours before the warning signal of the first race to which they apply, except that any change to the schedule of races will be posted no later than 20h00 the day before it will take effect in both the physical and virtual ONB.

4. SIGNALS MADE ASHORE

4.1 Signals made ashore will be displayed on the Signal Mast located on the terrace of the 3rd floor of the clubhouse.

4.2 When AP Flag is displayed ashore, the expression “1 minute” in the definition of the race signals is replaced with “not less than **40 minutes**”. (This changes Signal AP of the Race Signals of RRS).

4.3 A white flag with the number 1 or number 2 and with one sound displayed at least 60 minutes before the time for the first warning signal or not later than the time the AP flag is lowered, whatever happens later, means: ‘Races will be sailed in the race area 1 or 2 respectively’.

5. RACE SCHEDULE

5.1 Racing programme:

King Juan Carlos Regatta <i>(Tune up race. There will be a separate NOR and SI for this regatta available at www.regatareyjuancarlos.com)</i>		
Day 1	Friday, 10 th June	Registration & Measurement for Worlds 14h00 Races King Juan Carlos I Regatta
Day 2	Saturday, 11 th June	Registration & Measurement for Worlds 13h00 Races King Juan Carlos I Regatta
Day 3	Sunday, 12 th June	Registration & Measurement for Worlds 13h00 Races King Juan Carlos I Regatta



2022 Xacobeo 6mR Worlds		
Day 4	Monday, 13 th June	Final Measurements for Worlds Official Practice Race Opening Ceremony
Day 5	Tuesday, 14 th June	Race 1 - Race 2
Day 6	Wednesday, 15 th June	Race 3 - Race 4
Day 7	Thursday, 16 th June	Race 5 - Race 6
Day 8	Friday, 17 th June	Race 7
Day 9	Saturday, 18 th June	Race 8 Prize Giving Ceremony

5.2 Eight races are scheduled for the 2022 Xacobeo 6mR Worlds. Two races per day are scheduled, except on Friday 17th June and Saturday 18th June, when only one race per day is scheduled. Additional races may be sailed due to exceptional circumstances on condition that the racing programme of the event will not become more than one race ahead of schedule.

5.3 The scheduled time of the warning signal for the first race each day is 13h00.

5.4 On Saturday 18th of June no warning signal will be displayed after 16h00 (being understood that such a warning signal from one of the classes entails the continuity of the procedure for the other class.)

5.5 There will be separate starts for both divisions (Open and Classics), with an interval of 10 minutes between the two starts. The Race Committee may vary this interval if necessary.

5.6 The warning signal for a race in the same day will be made as soon as possible. To alert boats that a race or sequence of races will begin soon, an orange flag will be displayed with one sound at least FIVE minutes before the warning signal is made.



6. CLASS FLAGS

6.1 The class flag for OPEN Division will be **D (Delta)**



6.2 The class flag for CLASSIC Division will be **E (Echo)**



7. RACING AREAS

7.1 Appendix A shows the approximate location of the racing areas, set in the waters of the Pontevedra estuary.

7.2 The starting area will be located as indicated in Appendix A, with two possible race areas (1 and 2). The designated race area will be communicated as per the SI 4.3

7.3 The starting area is defined as the rectangle covering an area of 100 metres to leeward and to windward of the starting line, and 50 metres outwards of each end of the line.

7.3 The Race Course is defined as the surface of a polygon whose edge exceeds by 100 meters the shortest theoretical course that a boat could make in racing.

8. COURSES

8.1 **Appendix B** shows the W/L courses, including the order in which the marks are to be passed or rounded, and the side on which each mark has to be left.

8.2 No later than the warning signal the Race Committee may signal the bearing to the first mark, broadcasting this information also via **VHF 69**.

8.3 Depending on the weather conditions, the distance of each leg (except 1-2) will be between 1.3 and 2.0 nautical miles in order to achieve the intended duration of the race.

8.4 The races may be shortened only when a minimum of three legs have been sailed (not taking into account the leg from 1 to 2).



8.5 The gate (3S/3P) may be substituted by a single mark, in that case this one shall be left to port.

9. MARKS

9.1 **COURSE MARKS:** Marks 1, 2 & 3 (S/P) will be conical yellow buoys.

9.2 **CHANGE OF COURSE MARK** will be a conical red buoy.

9.3 **STARTING MARKS:** Race Committee vessel at the starboard end of the line and pin boat on the port end, both displaying an orange flag.

9.4 **FINISHING MARKS:** Race Committee vessel displaying a blue flag and a cylindrical orange buoy.

10. THE START

10.1 **Starting line:** The starting line will be between the masts displaying orange flags in the starting marks. 10.2 Races will start using the following signals:

Minutes before starting signal	Visual signal displayed	Visual signal removed	Sound signal	Means
5	Class flag		1	Warning signal
4	P, I, U or Black flag		1	Preparatory signal
1		P, I, U or Black flag	1 long	1 minute
0		Class flag	1	Starting signal

10.3 A boat starting later than **4 minutes** after her starting signal will be scored Did Not Start (DNS) without a hearing. This changes RRS A4 and A5.1

10.4 [NP](DP) Boats whose warning signal has not been made shall avoid the starting area and either side of the starting line (see SI 7.3)



10.5 The sail number of the boats identified as OCS, UFD or BFD may be shown in the Race Committee vessel at the starting line once the boats of the last fleet are rounding mark 1.

11. CHANGE OF THE NEXT LEG OF THE COURSE

11.1 To change the next leg of the course, the Race Committee will lay a new RED mark (or move the gate marks or the finishing line) and remove the original mark as soon as practicable.

11.2 A change to the position of mark 1 will remove the mark 2 (Offset).

12. THE FINISH

12.1 The finishing line is between a staff in a RC vessel displaying a blue flag and a cylindrical orange buoy.

13. PENALTY SYSTEM

13.1 RRS 44.1 is changed so that the Two-Turns Penalty is replaced by the One-Turn Penalty.

13.2 In RRS 44.2 insert after the first sentence: However, if the offset mark has to be rounded, a boat shall not take a penalty in the zone around Mark 1 nor in the leg between Mark 1 and Mark 2 (offset), until she has left the offset mark **zone**. This changes RRS 44.2.

13.3 The International jury may impose suitable penalties other than disqualification for violations of rules other than Part 2 rules. This changes RRS 64.1.



14. TIME LIMITS AND TIME TARGETS

14.1 Time limits and target times will be as follows:

14.2 If no boat has passed Mark 1 within the Mark 1-time limit, the race will be abandoned. Failure to meet the target time will not be grounds for redress. This changes RRS 62.1 (a).

14.3 Boats failing to finish within 30 minutes after the first boat of each division sails the course and finishes, will be scored Did Not Finished (DNF) without a hearing. This change RRS 35, A4 and A5.1

15. REQUESTS FOR HEARINGS

15.1 A boat that finishes and that has the intention to protest shall inform (by voice or via VHF 69) the RC boat on the finish line right after finishing until her intention has been recognized by the RC and identifying those boats she intends to protest against. Addendum to RRS 61.1 (a).

15.2 A boat that retires or does not finish and has the intention to **protest** shall inform the Race Office (downstairs at the club house) as soon as possible after her arrival on shore by indicating the sail number of the boat she intends to protest against. Protest forms are available at the Race Office. Protests and requests for redress or reopening shall be delivered there within the protest time limit.

15.3 The protest time limit is 120 minutes after the last boat of each division has finished the last race of the day or the Race Committee signals no more racing that day, whichever is the later. The resulting time limits will be posted on both the physical and virtual ONB.

15.4 Notices will be posted no later than 30 minutes after the protest time limit on the ONBs to inform competitors of hearings in which they are parties or named as witnesses. Hearings will be held in the Jury room, located near from the Race Office.

15.5 Decisions of the International Jury will be unappeasable as provided in RRS 70.5.



16. SCORING

16.1 Eight races are scheduled. The World Championship will be valid if five races have been completed.

16.2 a) When fewer than six races have been completed, a boat's series score will be the total of her race scores.

b) When six or more races have been completed, a boat's series score will be the total of her race scores excluding her worst score.

16.3 There will be two independent rankings: Open and Classics.

16.4 To request correction of an alleged error in posted race or series results, a boat shall complete a 'scoring enquiry form' available at the Race Office.

17. SAFETY REGULATIONS [NP][DP]

17.1 Boats arriving for any reason at a point ashore other than the RCNS are requested to report immediately to:

17.2 Boats not leaving the harbour for the races of the day, not starting, or retiring from a race shall inform the Race Committee as soon as possible. If they are on the water, they will inform via **VHF 69**.

17.3 All boats shall return only to their allocated moorings.

17.4 To facilitate the search and rescue operations, boats asking for help are requested to signal their position and their identifying external details.

17.5 The Maritime Rescue Coordination Center broadcasts a local weather report daily on VHF 11 at the following local times:

08h15 12h15 16h15 20h15

17.6 All competitors shall carefully comply with this sailing instruction. Otherwise they can be requested to pay the expenses of search and rescue operations.



18. REPLACEMENT OF CREW AND EQUIPMENT [NP] [DP]

18.1 Boats will be able to replace a crew member during the championship for another crewmember properly registered informing the Race Committee. Replacement of another crew member will not be allowed without prior approval of the Race Committee.

18.2 Substitution of damaged or lost equipment that must be measured, is only allowed with approval of the Technical Committee.

19. EQUIPMENT AND MEASUREMENT CHECKS

19.1 A boat may be inspected by the Technical Committee at any time for compliance with the class rules.

20. OFFICIAL BOATS

20.1 The official boats will be identified by displaying flags as follows:

Race Committee Boat	Yellow Flag
Jury boats	White flag with letters "JURY" in black
Technical Committee boat	White flag with letters "TC" in black

21. SUPPORT BOATS (DP) [NP]

21.1 All support boats shall display their national flag. Team leaders, coaches and other support personnel shall stay outside areas where boats are racing from the time of the preparatory signal for the first division to start until all boats have finished or the Race Committee signals a postponement, a general recall or an abandonment.



22. HAUL-OUT RESTRICTIONS (DP) [NP]

22.1 From 20h00 on the day before the first world championship racing day, boats shall not be hauled out, except with and according to the terms of prior written permission of the PRO.

22.2 In the event of an urgent need to haul-out, the person in charge of the boat will do everything possible to communicate via radio, telephone or otherwise with the PRO and, if this is not achieved, authorization may be requested later.

23. COMMUNICATIONS [NP] [DP]

23.1 Except in case of emergency or to comply with a rule, a boat shall not make nor receive any transmission while racing that is not available to all boats; except those allowed in SI 1.9 and 23.2.

23.2 The Race Committee will make use of **VHF 69** to make announcements to competitors.

23.3 Thirty minutes before the time of the preparatory signal for the first race of the day, the Race Committee will emit, if possible, a time check in that channel.

24. PRIZES

24.1 Trophies will be awarded in accordance with the International Six Metre Championship Rules for the World Championship:

The **Juan Sebastián de Elcano Trophy** offered by the Spanish Navy in commemoration of the 500 Anniversary of the First Circumnavigation of the Earth and awarded to the winning yacht in the Classic Division.

The **Xacobeo 21-22 Trophy** offered by the Xunta de Galicia (Galician Government) and awarded to the winning yacht in the Open Division.



The **Six Metre World Cup Trophy** shall be awarded to the winning yacht in the Open Division.

The **Djinn Trophy** awarded to the highest placed Classic yacht. For the purpose of this trophy, Classic is defined as a boat first constructed and/or certificated before 31 December 1965 and built according to Class rules and guidelines. Replicas of such yachts whose construction has been endorsed by the International Six Metre Association Classics and Technical Committees are also eligible to compete for the Djinn Trophy. Yachts which hold a certificate issued using the provisions of Appendix A of the Class Rule are not eligible for the Djinn Trophy.

The **KSSS Cup** shall be awarded to the highest placing Classic yacht built to the First (1907-1919) or Second (1919-1933) International Rule which retains its original underwater configuration.

The **Lucie Trophy** shall be awarded to the highest placed yacht which includes a woman as helmsperson or crew. In the event of a tie, the tied yacht with the most women wins the Trophy. If two or more yachts remain tied, the tied scores shall be resolved by the methods outlined in the Racing Rules of Sailing, Appendix A - Scoring to determine the winning yacht. If the result remains a tie, the trophy shall be held jointly and each yacht will have the right to engrave their name on a plaque

The **Nelson Trophy** shall be awarded to the highest placed yacht in the Open Division among those first constructed between 1966 and 6 September 1979 (the date of the first race of the 1979 World Championships) inclusive, and which has had no alteration to its underwater shape other than permitted modifications to the rudder. Should such modification have been carried out, then the rudder shall a maximum thickness (athwartship dimension) of no more than 95mm.

The **Robbe & Berking Trophy** shall be awarded, in accordance with the Deed of Gift for the trophy dated 5 October 2008, to the highest placed Classic yacht which uses white or cream sails, wooden mast, boom and poles and flies a racing flag.

The **AYRS Astor Cup** awarded to the highest placed boat at the end of racing which includes a person aged 25 years or under as helmsperson or crew. In the event of a tie, the Cup will be awarded to the yacht with the most wins. If the result remains a tie, the tied scores shall be resolved by the method reasonably and fairly determined by the Race



2022 Xacobeo 6mR Worlds | Sanxenxo (Spain), 10th to 18th June 2022

Committee of the event.

The **Street Trophy** shall be awarded to the highest placed Classic yacht which holds a certificate issued under the provisions of Appendix A of the Class Rule. For the purpose of this trophy, Classic is defined as a boat first constructed and/or certificated before 31 December 1965 and built according to Class rules and guidelines. Replicas of such yachts are not eligible for Appendix A and hence not eligible for this trophy

The **Merula Trophy** awarded to the highest placed Classic yacht built to the First (1907-1919) International Rule which retains its original underwater configuration.

The **Shipshape Trophy** awarded to the official practice race's winning yacht in the Open Division.

The **Maharajah of Djeezupuhr Trophy** awarded to the official practice race's winning yacht for the Classic Division.

The complete list of trophies will be posted on the Official Notice Board.

24.2 The Social Events scheduled during the racing days will be posted on the ONB

25. DISCLAIMER OF LIABILITY

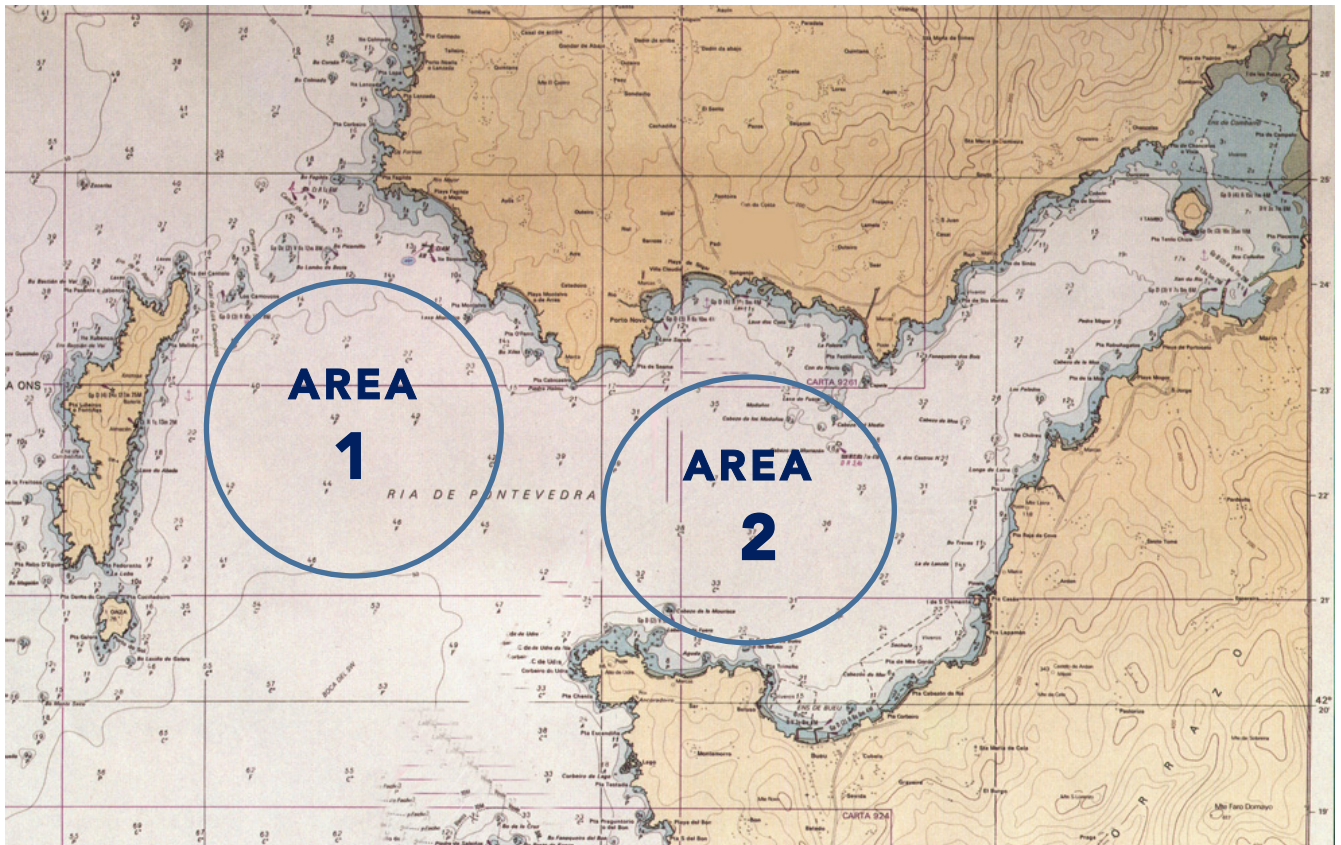
25.1 All competitors participate in the regattas entirely at their own risk and responsibility. See RRS 3 – Decision to Race.

APPENDIX A
RACING AREA

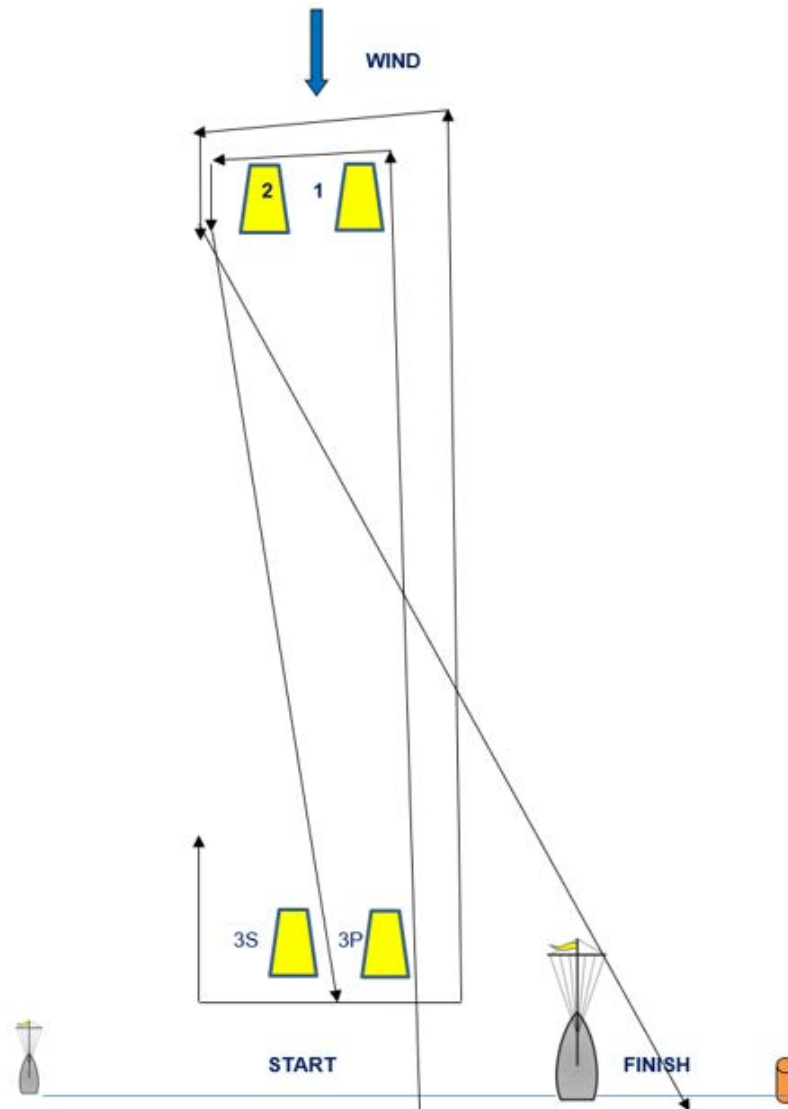
Race Areas

1 = Flag with number 1

2 = Flag with number 2



APPENDIX B
RACE COURSE



Race Course:

Start - Mark 1 – Mark 2 - Mark 3S/3P (Gate) - Mark 1 – Mark 2 - Finish

Marks 1, 2 & 3P shall be left to port

Mark 3S shall be left to starboard



APPENDIX C

MINIMUM SAFETY EQUIPMENT - Six Metre Class

1	Anchor (minimum 10 kg) with at least 30 metres of rope (minimum 10 mm)
2	Winch handle(s)
3	Hatch Covers (if needed)
4	Floor boards (in the normal sailing position)
5	Handheld VHF
6	Portable or fixed bilge pump (discharging overboard)
7	Towing rope (minimum 15 m)
8	Smartphone (for eStela tracking system)
9	Paddle
10	Lifejacket (minimum 50N and one for each crewmember)