



2021 Six Metre Spanish Cup Circuit V CENTENARIO 1ª VUELTA AL MUNDO XACOBEO 2021

8th Regatta - November 12th, 13th & 14th, 2021 – 6mR Open & Classics

REAL CLUB NÁUTICO DE SANXENXO

SAILING INSTRUCTIONS (SI)

The 8th regatta of the 2021 6mR Spanish Cup Circuit will be held in the waters of the Pontevedra estuary the 12th, 13th and 14th of November, 2021, being organized by the Real Club Náutico de Sanxenxo (RCNS) and Spanish Six Metre Association by delegation of the Real Federación Española de Vela (RFEV).

Besides, the 2021 Spanish Cup Circuit is a qualifying event for the 6mR Classics & Open **Challenge Nao Victoria**.

The notation [DP] means that a breach of that rule will not be ground for protests by a boat. This changes RRS 60.1 (a).

The Jury may apply a penalty other than disqualification for a breach of a rule with the notation [DP]. This changes RRS 64.1.

1. RULES

1.1 The Regatta will be governed by the rules as defined in the Racing Rules of Sailing (RRS) 2021-2024.

1.2 [DP] The Equipment Rules of World Sailing (ERS).

1.3 [DP] The International Six Metre Class Rating Rules.

1.4 The RRS 90.3 (e) applies. The word “24 hours” is changed by “60 minutes”

1.5 In RRS 44.2 insert after the first sentence: However, if the offset mark has to be rounded, a boat may not take a penalty in the zone around Mark 1 or on the leg between Mark 1 and Mark 2 (offset), until she has left the offset mark. This changes RRS 44.2.

1.6 [NP][DP] **Special Rules.**

(a) Boats shall not put trash in the water. Trash may be placed aboard and then disposed in the containers on land.

(b) Each participating boat may be requested by the organizing authority to carry aboard cameras, sound and a positioning system device.



(c) Each boat must have on board a smartphone with the app eStela installed and in operation during the races. The organizers will provide the access code for each boat.

1.7 [NP][DP] All competitors and staff will follow any reasonable instruction given by a Race Committee Official.


2. NOTICES TO COMPETITORS


2.1 Notices to competitors will be posted on the Official Notice Board (ONB) located at the Race Office, downstairs at the RCNS, and also on the Official Virtual Notice Board at www.desmarque.es

3. CHANGES TO SAILING INSTRUCTIONS

3.1 Any changes to the SIs will be posted no later than 2 hours before the warning signal of the first race to which they apply, except that any change to the schedule of races will be posted by 20h00 the day before it will take effect in both the physical and virtual ONB.

4. SIGNALS MADE ASHORE

4.1 Signals made ashore will be displayed on the Signal Mast located on the terrace of the 3rd floor of the club house. 

4.2 When AP Flag is displayed ashore, the expression “1 minute” in the definition of the race signals is replaced with “not less than 40 minutes”  (This changes Signal AP of the Race Signals of RRS)

4.3 Numeral pennant 1 or numeral pennant 2 with one sound displayed at least 60 minutes before the time for the first warning signal or not later than the time the AP flag is lowered, whatever happens later, means: ‘Races will be sailed in the race area 1 or 2 respectively’.

5. RACE SCHEDULE

5.1 Racing programme.

Day 1	Friday, 12 th November	10h00 – 12h00 12h00 14h00	Race Office opens Skippers briefing Warning signal
Day 2	Saturday, 13 th November	13h00	Warning signal
Day 3	Sunday, 14 th November	12h00 16h00	Warning signal Time limit

5.2 Six races are scheduled. Two races per day are scheduled. Additional races may be sailed due to exceptional circumstances on condition that the racing programme of the event will not become more than one race ahead of schedule.

5.3 On Sunday 14th of November no warning signal will be displayed after 16h00



5.4 There will be separate starts for both divisions (Open and Classics), with an interval of five minutes between the two starts. The Race Committee may vary this interval if necessary.

5.6 The warning signal for a race in the same day will be made as soon as possible. To alert boats that a race or sequence of races will begin soon, an orange flag will be displayed with one sound at least five minutes before the warning signal is made. [SEP]

6. CLASS FLAGS

6.1 The class flag for OPEN Division will be **D (Delta)**



6.2 The class flag for CLASSIC Division will be **E (Echo)**



7. RACING AREAS

7.1 Appendix A shows the approximate location of the racing area, set in the waters of the Pontevedra estuary.

The starting area will be located as indicated in Appendix A, with two possible race areas (1 and 2). The designated race area will be communicated as per the SI 4.3

7.2 The starting area is defined as the rectangle covering an area of 100 metres to leeward and to windward of the starting line, and 50 metres outwards of each end of the line. [SEP]

7.3 The Race Course is defined as the surface of a polygon whose edge exceeds by 100 meters the shortest theoretical course that a boat could make in racing.

8. COURSES

8.1 Appendix B shows the W/L courses, including the order in which the marks are to be passed or rounded, and the side on which each mark has to be left. [SEP]

8.2 No later than the warning signal the Race Committee will may signal the approximate bearing to the first mark, broadcasting this information also via VHF 69.

8.3 Depending on the weather conditions, the distance of each leg (except offset 1-2) will be between 1.3 and 2.0 nautical miles in order to achieve the intended duration of the race.

8.4 The races may be shortened only when a minimum of three legs have been sailed (not taking into account offset 1-2).

8.5 The gate (3S/3P) may be substituted by a single mark, in that case this one shall be left to port. [SEP]

8.6 Depending on the weather conditions, coastal races may be established; they will be decided and notified by the VHF channel number 69 from 20 minutes before the corresponding warning



signal; as well as it will be displayed on a blackboard aboard the RC boat with the inscription “Appendix C” before the warning signal. (See Fixed Marks Location for Coastal Courses in Appendix C).

9. MARKS

9.1 **COURSE MARKS:** Marks 1, 2 & 3 (S/P) will be conical yellow buoys.

9.2 **CHANGE OF COURSE MARK** will be a conical red buoy.

9.3 **STARTING MARKS:** Race Committee vessel at the starboard end of the line displaying an orange flag ^[SEP] and yellow conical buoy (3P) on the port end.

9.4 **FINISHING MARKS:** Race Committee vessel displaying a blue flag and a cylindrical orange buoy.

9.5 (Only Coastal Courses) If the Race Committee decides to put a demarque mark, anchored to the wind a yellow inflatable mark at a distance that will be indicated by the race committee along with the course to which it is situated. If a red flag is displayed on the committee ship, it will be left to port and if it is displayed a green flag, to starboard. If none is displayed, there is no clear mark.

10. THE START

10.1 **Starting line:** The starting line will be between the mast of the RC vessel displaying an orange flag at the starboard end of the line and a floatable yellow conical buoy on the port end.

10.2 Races will start using the following signals:

Minutes before starting signal	Visual signal displayed	Visual signal removed	Sound signal	Means
10	Orange flag		1	Warning signal in 5 minutes
5	Class flag		1	Warning signal
4	P, I, U or Black flag		1	Preparatory signal
1		P, I, U or Black flag	1 long	1 minute
0		Class flag	1	Starting signal

10.3 A boat starting later than four minutes after her starting signal will be scored Did Not Start (DNS) ^[SEP] without a hearing. This changes RRS A4 and A5.1

10.4 [NP](DP) Boats whose warning signal has not been made shall avoid the starting area and either side of the starting line (see SI 7.2)

10.5 In the case of unfavourable conditions the Race Committee boat may maintain her position by using the engine.



11. CHANGE OF THE NEXT LEG OF THE COURSE

11.1 To change the next leg of the course, the Race Committee will lay a new red mark (or move the finishing line) and remove the original mark as soon as practicable or move the gate marks.

In order to maintain the course configuration, any mark that needs to be rounded may be repositioned after rounding the new mark.

When in a subsequent change a new mark is replaced, it will be replaced by a mark with the original colour and shape.

11.2 Except at a gate, boats shall pass between the race committee boat signalling the change of the next leg and the nearby mark.

11.3 A change to the position of mark 1 will remove the mark 2 (Offset).

12. THE FINISH

12.1 The finishing line is between a staff in a RC vessel displaying a blue flag and a cylindrical orange buoy.

12.2 The Race Committee boat at the finishing line can maintain her position by using the engine.

13. PENALTY SYSTEM

13.1 RSS 44.1 is changed so that the Two-Turns Penalty is replaced by the One-Turn Penalty.

13.2 A boat that has taken a penalty or has retired must complete an acknowledgement form at the race office within the protest time limit or as soon as possible (addition to RRS 44).

14. TIME LIMITS AND TIME TARGETS

14.1 Time limits and target times will be as follows:

Class	Time limit	Mark 1 time limit	Target time
Open	100 min	35 min	60 min
Classics	100 min	40 min	60 min

14.2 If no boat has passed Mark 1 within the Mark 1-time limit, the race will be abandoned. Failure to meet the target time will not be grounds for redress. This changes RRS 62.1 (a).

14.3 Boats failing to finish within 30 minutes after the first boat of each class sails the course and finishes, will be scored DNF without a hearing. This change RRS 35, A4 and A5.1

14.4 For coastal races the time limit is 30 minutes per nautical mile for the first boat and 15 minutes after the arrival of the first boat for the rest of the competitor boats.



15. REQUESTS FOR REDRESS

15.1 A boat that finishes and that has the intention to protest shall inform (by voice or via VHF 69) the RC boat on the finish line right after finishing until her intention has been recognized by the RC and identifying those boats she intends to protest against. Addendum to RRS 61.1 (a).

15.2 A boat that retires or does not finish and has the intention to protest shall inform the Race Office (downstairs at the club house) right after her arrival on shore by indicating the sail number of the boat she intends to protest against.

Protest forms will be available at ^[1]_[SEP] the Race Office.

Protests and requests for redress or reopening shall be delivered there within the protest time limit.

^[1]_[SEP]

15.3 The protest time limit is 60 minutes after the last boat has finished the last race of the day or the Race Committee signals no more racing that day, whichever is the later. The exact time will be immediately indicated in both the physical and virtual ONB.

15.4 Notices will be posted no later than 15 minutes after the protest time limit on the ONBs to inform competitors of hearings in which they are parties or named as witnesses. Hearings will be held in the Jury room, located near from the Race Office.

16. SCORING

16.1 Six races are scheduled.

16.2 a) In this regatta, when 6 races have been completed, the total score of each boat will be the sum of all her points, discarding her worst score.

b) For the general scoring of the 6mR Spanish Cup Circuit, the worst race score from every six valid races will be discarded.

16.3 There will be two independent rankings: Open and Classics.

16.4 To request correction of an alleged error in posted race or series results, a boat shall complete a 'scoring enquiry form' available at the Race Office.

17. SAFETY REGULATIONS [NP][DP]

17.1 Boats arriving for any reason at a point ashore other than the RCNS are requested to report immediately to: ^[1]_[SEP]

RCN Sanxenxo	609 98 88 86	VHF 09
PRO	608 82 30 36	VHF 69



Maritime Rescue Coordination Center	900.202.202	VHF 10 / 16
-------------------------------------	-------------	-------------

17.2 Boats not leaving the harbour for the races of the day, not starting, or retiring from a race shall inform the Race Committee as soon as possible. If they are on the water, they will inform via VHF 69.

17.3 All boats shall return only to their allocated moorings. [SEP]

17.4 To facilitate the search and rescue operations, boats asking for help are requested to signal their position and their identifying external details. [SEP]

17.5 The Maritime Rescue Coordination Center broadcasts a local weather report daily on VHF 11 at the following local times:

08h15 12h15 16h15 20h15

17.6 All competitors shall carefully comply with this sailing instruction. Otherwise they can be requested to pay the expenses of search and rescue operations. [SEP]

18. REPLACEMENT OF CREW AND EQUIPMENT [NP]

18.1 Boats wishing to replace a crew member during the regatta shall inform the Race Committee. Replacement of another crew member will not be allowed without prior approval of the Race Committee. [SEP]

18.2 The crew will be formed by a maximum of five crew members. A guest may join the crew, but he/she will not be able to participate in the maneuvers during the regatta. In addition, exceptionally, a minor may be part of a crew as long as he/she is duly registered. Both the guest and the under 18 sailor must be duly registered and in possession of a federative license.

18.3 Substitution of damaged or lost equipment that must be measured, is only allowed with approval of the Technical Committee. [SEP]

19. EQUIPMENT AND MEASUREMENT CHECKS

19.1 A boat may be inspected by the Technical Committee at any time for compliance with the class rules.

20. OFFICIAL BOATS

20.1 The official boats will be identified by displaying flags as follows:

Race Committee Boat	Yellow Flag
Jury boats	White flag with letters "JURY" in black
Technical Committee boat	White flag with letters "TC" in black



21. SUPPORT BOATS (DP) [NP]

21.1 All support boats shall be clearly identified so that they are associated with the competitor's boat that they support. Team leaders, coaches and other support personnel shall stay outside areas where boats are racing from the time of the warning signal for the first class to start until all boats have finished or the Race Committee signals a postponement, a general recall or an abandonment.

22. HAUL-OUT RESTRICTIONS (DP) [NP]

22.1 From 20h00 on the day before the beginning of the races, boats shall not be hauled out, except with and according to the terms of prior written permission of the PRO.

22.2 In the event of an urgent need to haul-out, the person in charge of the boat will do everything possible to communicate via radio, telephone or otherwise with the PRO and, if this is not achieved, authorization may be requested later.

23. RADIO COMMUNICATION (DP)

23.1 Except in an emergency or in order to accomplish a rule, a boat shall neither make transmissions while racing nor receive communications not available to all boats.

23.2 The Race Committee will make use of VHF 69 to make announcements to competitors.

23.3 Thirty minutes before the time of the warning signal for the first race of the day, the Race Committee will emit, if possible, a time check in that channel.

24. PRIZES

24.1 The RFEV will present a plate as champion of the Six Meter Spanish Cup to the winner of the Open Division and Classic Division whose crew is formed only by Spanish sailors or sailors with legal residence in Spain.

24.2 The complete list of trophies will be posted on the Official Notice Board before the start of the first race of the regatta.

24.3 The Social Events scheduled during the racing days will be posted on the ONB

25. DISCLAIMER OF LIABILITY

25.1 All competitors participate in the regatta entirely at their own risk and responsibility. See RRS 3 – Decision to Race.

ADDITIONAL INFORMATION – TIDES AND SUNSET

SUNSET IN THE AREA (local times):

Friday 11/12/21 = 18h15 - Saturday 11/13/21 = 18h14 - Sunday 11/14/21 = 18h13

Tide tables at the Pontevedra estuary (local times)

Pontevedra estuary Friday 12 th november		
	Time	Meters
Low Tide	03:57	1.4
High Tide	10:21	3.1
Low Tide	16:57	1.2
High Tide	23:19	2.8

Pontevedra estuary Saturday 13 th november		
	Time	Meters
Low Tide	05:19	1.4
High Tide	11:37	3.1
Low Tide	18:08	1.1

Pontevedra estuary Sunday 14 th november		
	Time	Meters
High Tide	00:26	2.9
Low Tide	06:25	1.3
High Tide	12:40	3.2
Low Tide	19:00	1.0

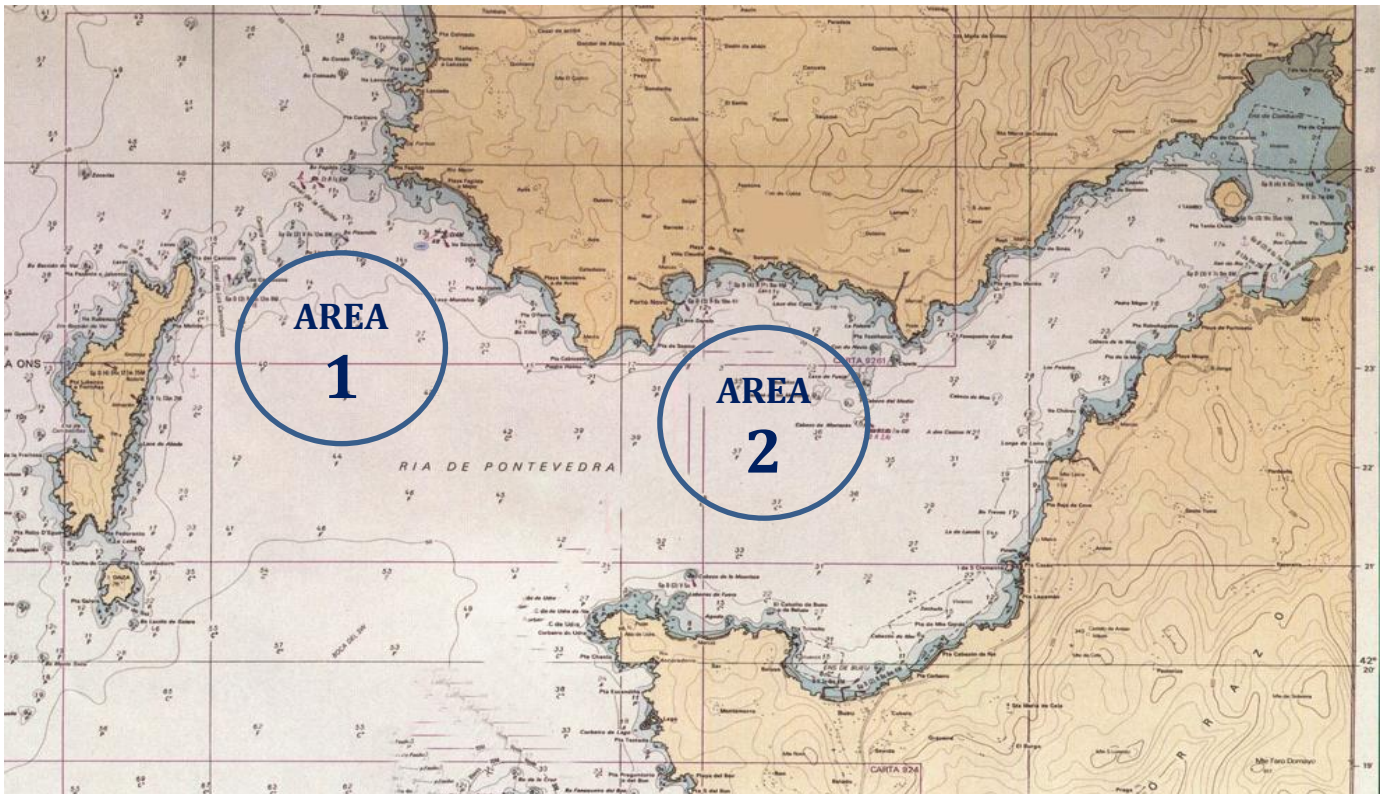
APPENDIX A

RACING AREAS

Race Areas following a preference order

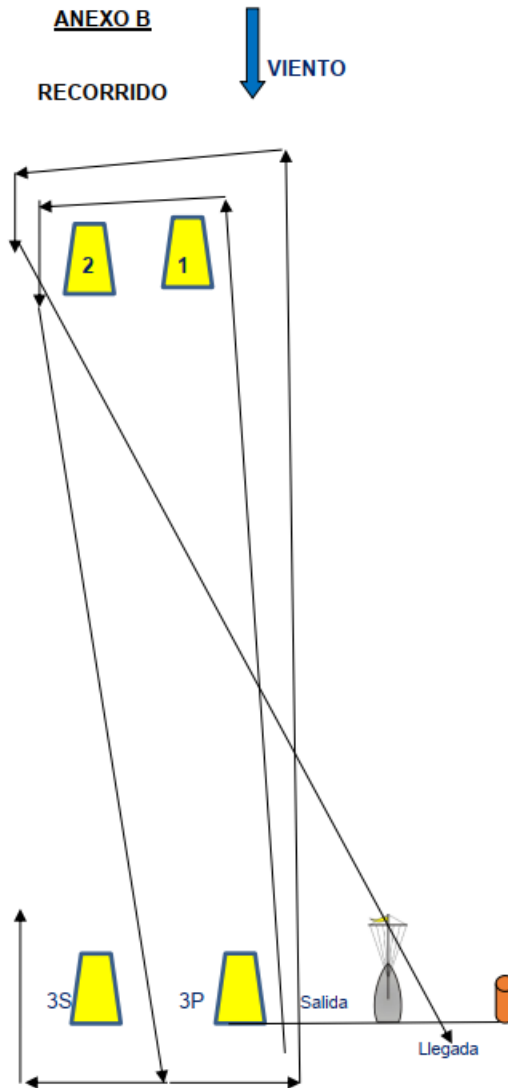
1 = Racing area Pennant 1

2 = Racing area Pennant 2



APPENDIX B

RACE COURSE



Race Course:

Start - Mark 1 – Mark 2 - Mark 3S/3P (Gate) - Mark 1 – Mark 2 - Finish
Marks 1, 2 & 3P shall be left to port
Mark 3S shall be left to starboard

APPENDIX C

COASTAL COURSES



Fixed Marks:

- Mourisca (Lighthouse in front of Bueu) = N 42° 20.874' - W 008° 49.202'
- Morrazán (Red Buoy in the centre of the Pontevedra estuary) = N 42° 22.372' - W 008° 47.016'
- Os Pelados (Bicolour Bouy in front of Agüete) = N 42° 23.033' - W 008° 44.444'
- Picamillo (Lighthouse at the salida of the estuary) = N 42° 24.275' - W 008° 53.430'
- Tambo (yellow) = N 42° 24.370' - W 008° 42.968'

